



C7 CARBON INSTALLATION GUIDE

BRAND *Chevrolet* **MODEL** *Corvette C6/GS/Z06/ZR1* **YEAR** *2005-2013*
PART NAME *REAR DIFFUSER - RACE EDITION*
PART NUMBER *C7-CCC6Z-RDR-CF*

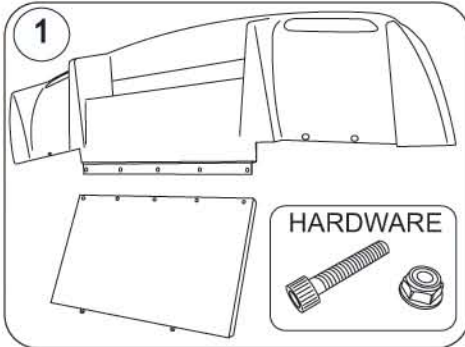
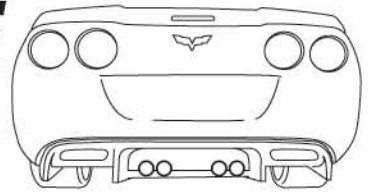
www.C7carbon.com

C7 CARBON - INSTALLATION GUIDE

BRAND Chevrolet MODEL Corvette C6/GS/Z06/ZR1 YEAR 2005-2013

PART NAME REAR DIFFUSER - RACE EDITION

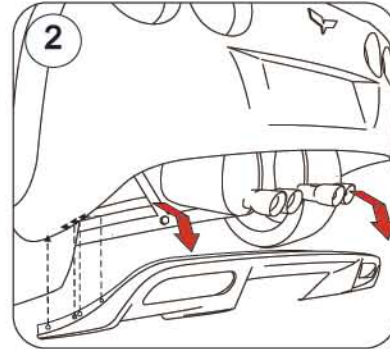
PART NUMBER C7-CCC6Z-RDR-CF



1.-Parts received in this package:

- 1x Rear Diffuser - Race Edition
- 1x Undertray
- 5x Thumb Screws
- 5x Self Locking Nuts

NOTE: OEM Hardware is re-used in order to install the Carbon Fiber Diffuser

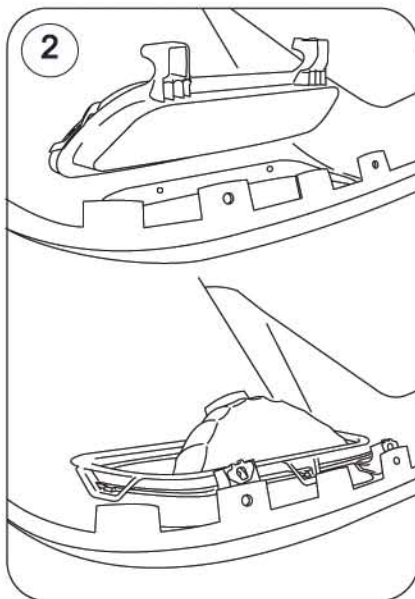


2.-Start by removing the Rear Diffuser.

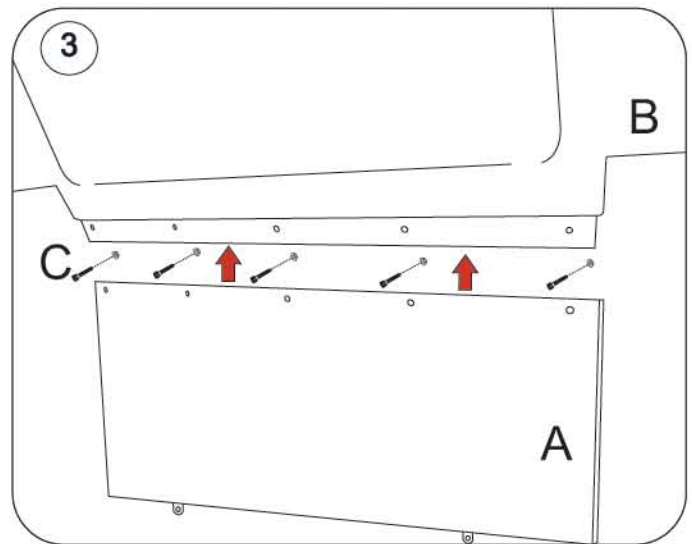
NOTES: Keep all the OEM mounting hardware since it will be used again when reinstalling the parts.

You may need to lift the rear of the vehicle for better workspace.

You may need to raise the car to a safe height in order to have sufficient workspace.



2.-Carefully insert the pins of the reverse light into the diffuser mounting tabs, press the reverse lights into position lining up to the pre-drilled holes and then secure it using the OEM hardware.



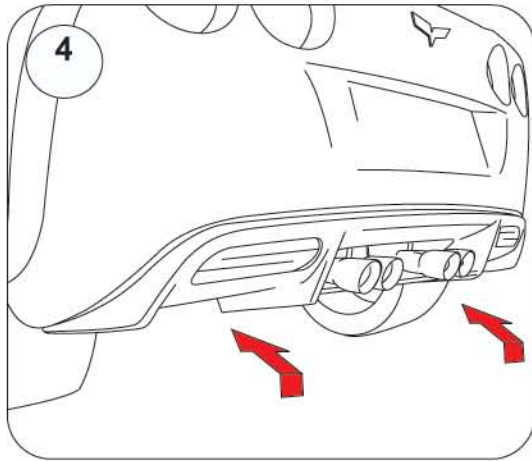
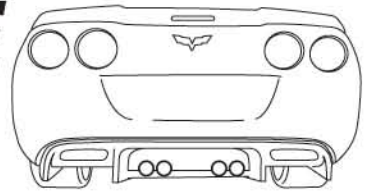
3.- Attach the Undertray (A) to the Rear Diffuser (B) using the Thumb Screws and Self Locking Nuts (C) that comes with the Race Diffuser package.

C7 CARBON - INSTALLATION GUIDE

BRAND Chevrolet MODEL Corvette C6/GS/Z06/ZR1 YEAR 2005-2013

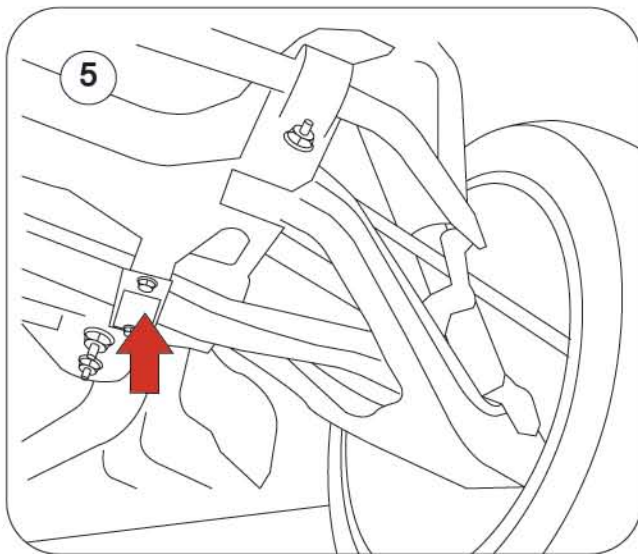
PART NAME REAR DIFFUSER - RACE EDITION

PART NUMBER C7-CCC6Z-RDR-CF

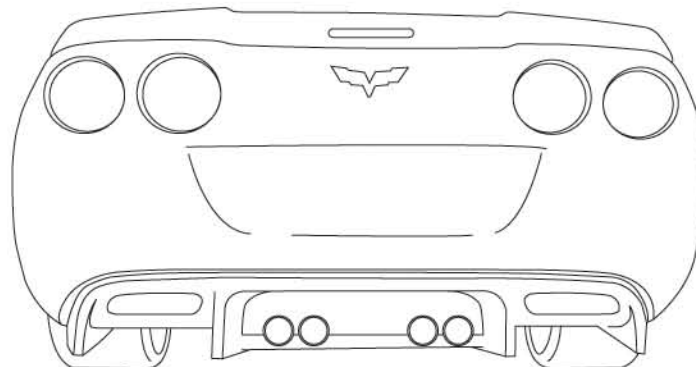


4.- Attach the Race Diffuser to the vehicle, using the diffuser tabs to guide it in the slotted holes on the bumper. Proceed to bolt on the Race Diffuser using the OEM hardware previously used for the OEM Diffuser.

NOTE.- You may need to slightly modify/trim the inner corner of the rear mudflap in order to have proper fitment.



5.- When mounting the diffuser, make sure to attach from underneath the tabs located on the front part of the under tray to the existing mounting points on the bottom part of the subframe. You will need to remove the bolts from those points and then screw it back on with the undertray tab hole in place and aligned with the subframe mounting point. Make sure both tabs are secured.



www.C7carbon.com

page 2 of 2

PLEASE NOTE: All parts must be prepped and installed by a professional body shop that has experience working with carbon fiber and fiberglass car parts including but not limited to cutting, filling, sanding, and shaving. Extra fees can be incurred for proper fitment. All parts are sold for off-road and show use only. We do not accept liability for injuries resulting from customization of buyer/owners car, this is done at their own risk. You, as the buyer, are responsible for complying with any/all local, state, and federal laws.