

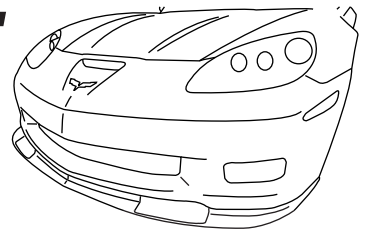


C7 CARBON INSTALLATION GUIDE

BRAND *Chevrolet* **MODEL** *Corvette GS/Z06/ZR1* **YEAR** *2005-2013*
PART NAME *Front Fascia Reinforcement*
PART NUMBERS *C7-CCC6Z-FFR-FRP*

www.C7carbon.com

C7 CARBON - INSTALLATION GUIDE

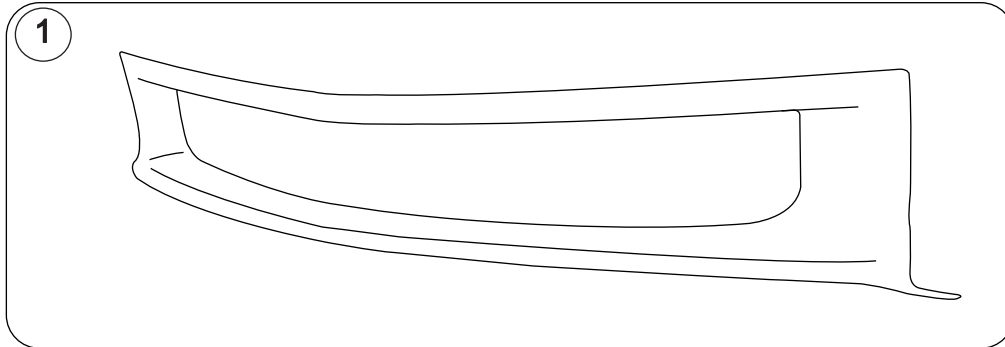


BRAND Chevrolet MODEL Corvette GS/Z06/ZR1

YEAR 2005-2013

PART NAME Front Fascia Reinforcement

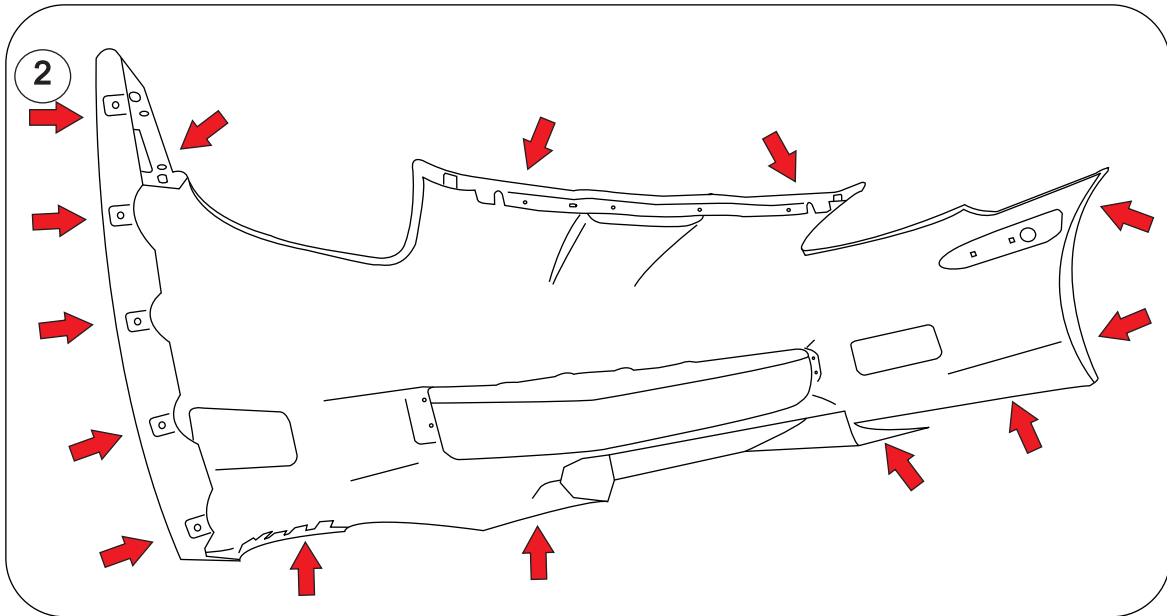
PART NUMBER C7-CCC6Z-FFR-FRP



1.- Parts received in this package:

- 1x Front Fascia Reinforcement

NOTE.- current OEM hardware in the vehicle will be used to help secure and finish installing this part.



2.- It is recommended to raise the front of the vehicle and take off the front bumper (Fascia) for a more comfortable working space. In order to remove the bumper it will be necessary to detach the plastic inner-liners and disconnect the fog lights, turn signals, etc. Several mounting points are located trough out the bumper that will need to be detached in order to remove it from the vehicle.

NOTE.- When raising the vehicle, it is recommended to use jack stands or car ramps for better safety.

www.C7carbon.com

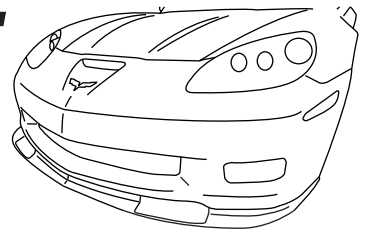
page 1 of 2

PLEASE NOTE: All parts must be prepped and installed by a professional body shop that has experience working with carbon fiber and fiberglass car parts including but not limited to cutting, filling, sanding, and shaving. Extra fees can be incurred for proper fitment. All parts are sold for off-road and show use only. We do not accept liability for injuries resulting from customization of buyer/owners car, this is done at their own risk. You, as the buyer, are responsible for complying with any/all local, state, and federal laws.

C7 CARBON - INSTALLATION GUIDE

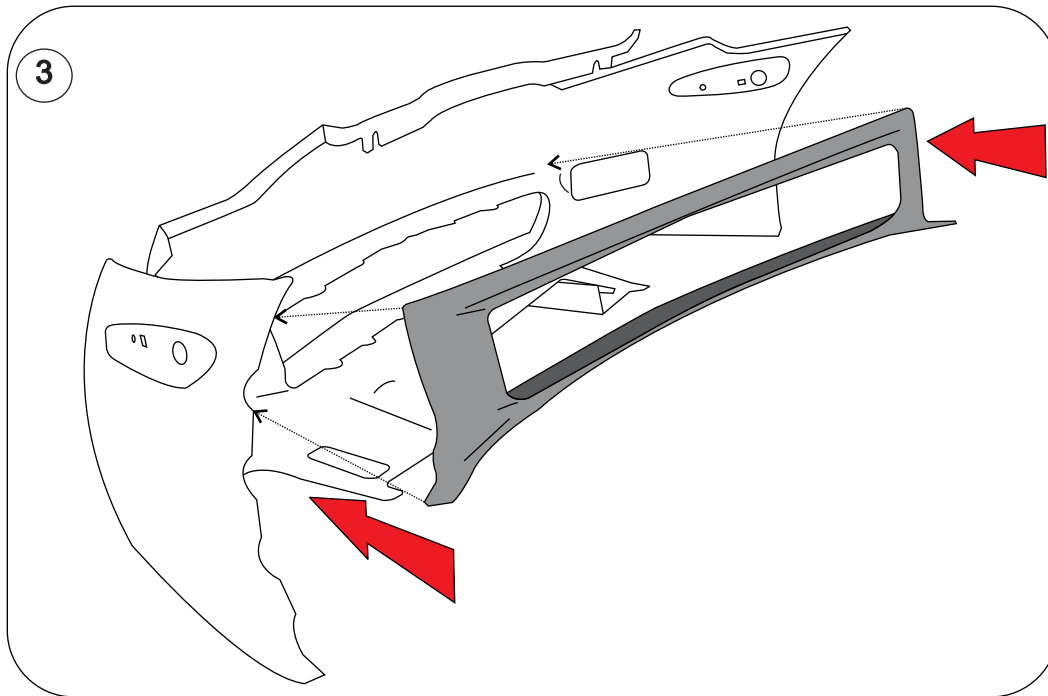
BRAND Chevrolet MODEL Corvette GS/Z06/ZR1

YEAR 2005-2013

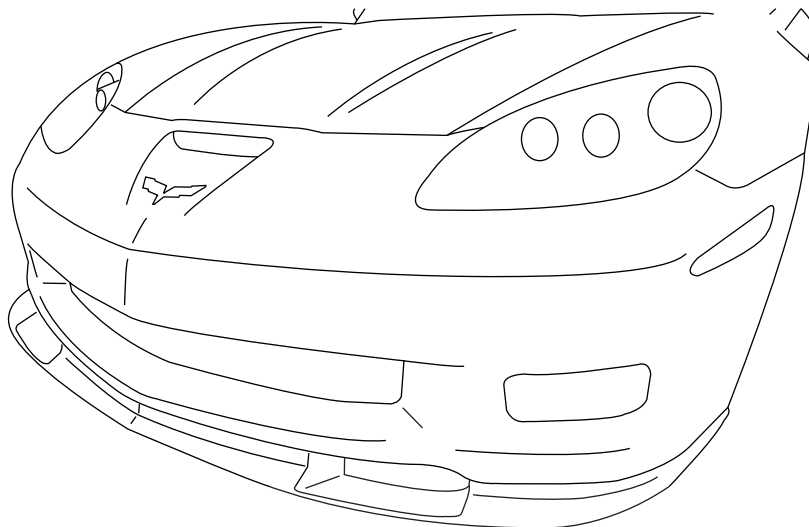


PART NAME Front Fascia Reinforcement

PART NUMBER C7-CCC6Z-FFR-FRP



3.- When the Front Bumper/Fascia is detached, slide the Front Fascia reinforcement from behind. The reinforcement will embrace the air intake walls for a snug fitment. Once the reinforcement is placed properly, it can be secured using the same pins that secures the front splitter to the Bumper/Fascia. Additional hardware such as self tapping screws and/or nuts and bolts can be used for more further grip.



Now that the Front Fascia Reinforcement is secured, reattach all accesories on to the front bumper to put it back in place with the inner liners on to the vehicle.

NOTE.- Make sure the lighting system is properly connected and in good operating conditions.

www.C7carbon.com

page 2 of 2

PLEASE NOTE: All parts must be prepped and installed by a professional body shop that has experience working with carbon fiber and fiberglass car parts including but not limited to cutting, filling, sanding, and shaving. Extra fees can be incurred for proper fitment. All parts are sold for off-road and show use only. We do not accept liability for injuries resulting from customization of buyer/owners car, this is done at their own risk. You, as the buyer, are responsible for complying with any/all local, state, and federal laws.